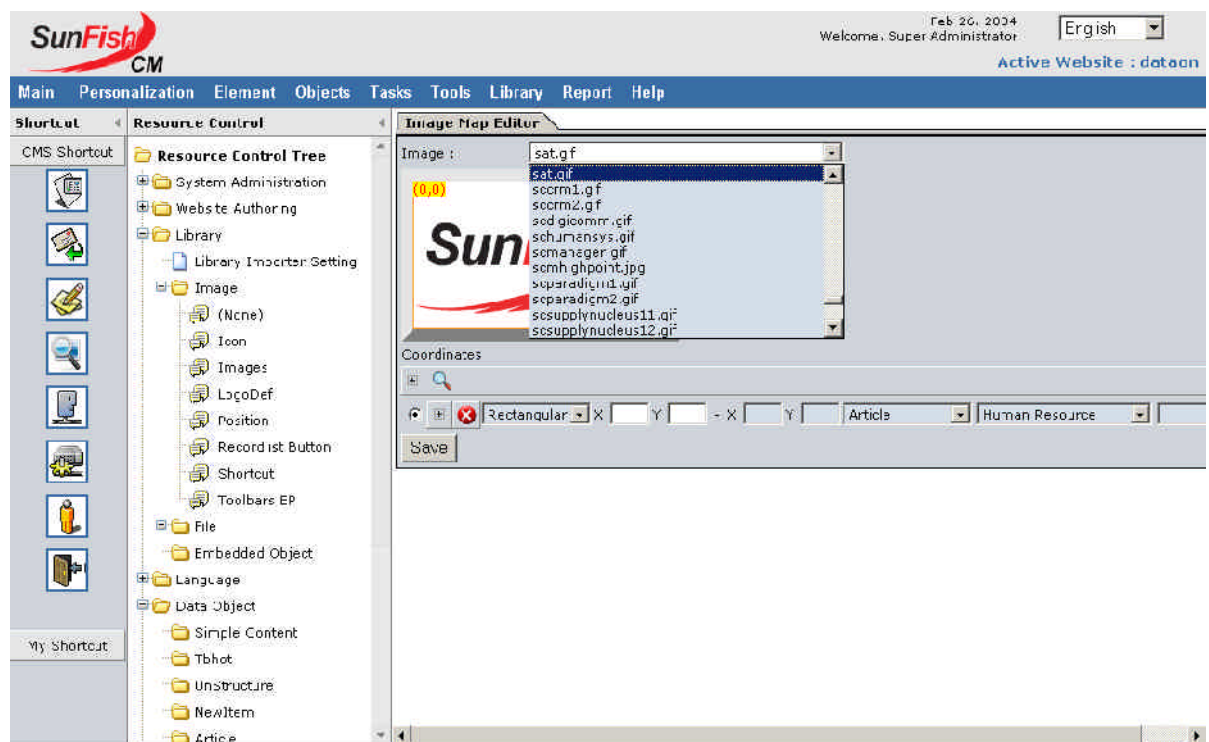


# Media Library

Websites are a visually rich medium of communication. Much more than traditionally printed media, websites allow and often require complex graphical manipulation as well as many multimedia features. SunFish CM supports these advanced features of the modern website, and allows companies to distribute the, often, complex media work to other different workers. In SunFish CM, all types of media (except website text) are organized and available through the Media Library.



Management of pictures, graphics, flash animations, documents, videos and other files can become complex as a website increases in size. In SunFish CM various types of media are managed in different ways. Although media will be managed directly by users editing content, designing templates, or performing other tasks with SunFish CM, the Media Library provides a central location where all types of media can be managed and manipulated. For integration of media from other sources, or to upload a large number of media items, the Media Library provides flexible management tools. Additionally, media can be previewed, edited, and translated to other languages through the Media Library. Graphics designers can use the Media Library to create a set of corporate images that content editors can include in articles, allowing a constant visual feel to be maintained.



# Media Library

The Media Library maintains folders for images, files or embedded objects at a single location, so that users do not need to upload the same images repeatedly. Using library folders will reduce the number of junk files on your folder. Up to 50 media files can be uploaded into the system at one time.

The screenshot shows the SunFish CM interface. The top navigation bar includes 'Main', 'Personalization', 'Element', 'Objects', 'Tasks', 'Tools', 'Library', 'Report', and 'Help'. The 'Library' menu is active. The 'Resource Control Tree' on the left shows a hierarchy: 'Library' > 'Image' > '(None)'. The 'Browse Images' section displays a 'Selected Image' with the following details: Image Name: esuport.gif, File Name: esuport.gif, File Size: 4.11 kb, Image Group: (empty), and Last Update: Oct 23, 2003. Below the details are buttons for 'Eack', 'Undelete', 'Delete', and 'Process Delete'. A grid of image thumbnails is visible, including logos for 'COSMA!', 'COSMOPOLITAN', and 'DataOn'. A 'Multiple Upload Images' dialog box is open, showing a 'Number of Image' dropdown set to 5, and five rows for 'Image #1' through 'Image #5', each with a '-None-' dropdown and a 'Browse...' button. 'Upload' and 'Cancel' buttons are at the bottom of the dialog.

The Media Library also allows the creation of image maps. Users can define areas of images that when clicked will perform a function or link to an interior or external web page.

In the Media Library, an editor can resize or reformat images, as well as convert images from different formats to JPG or GIF files. This allows more technical users to improve the performance of the site in the event that content editors insert incompatible or very large images.