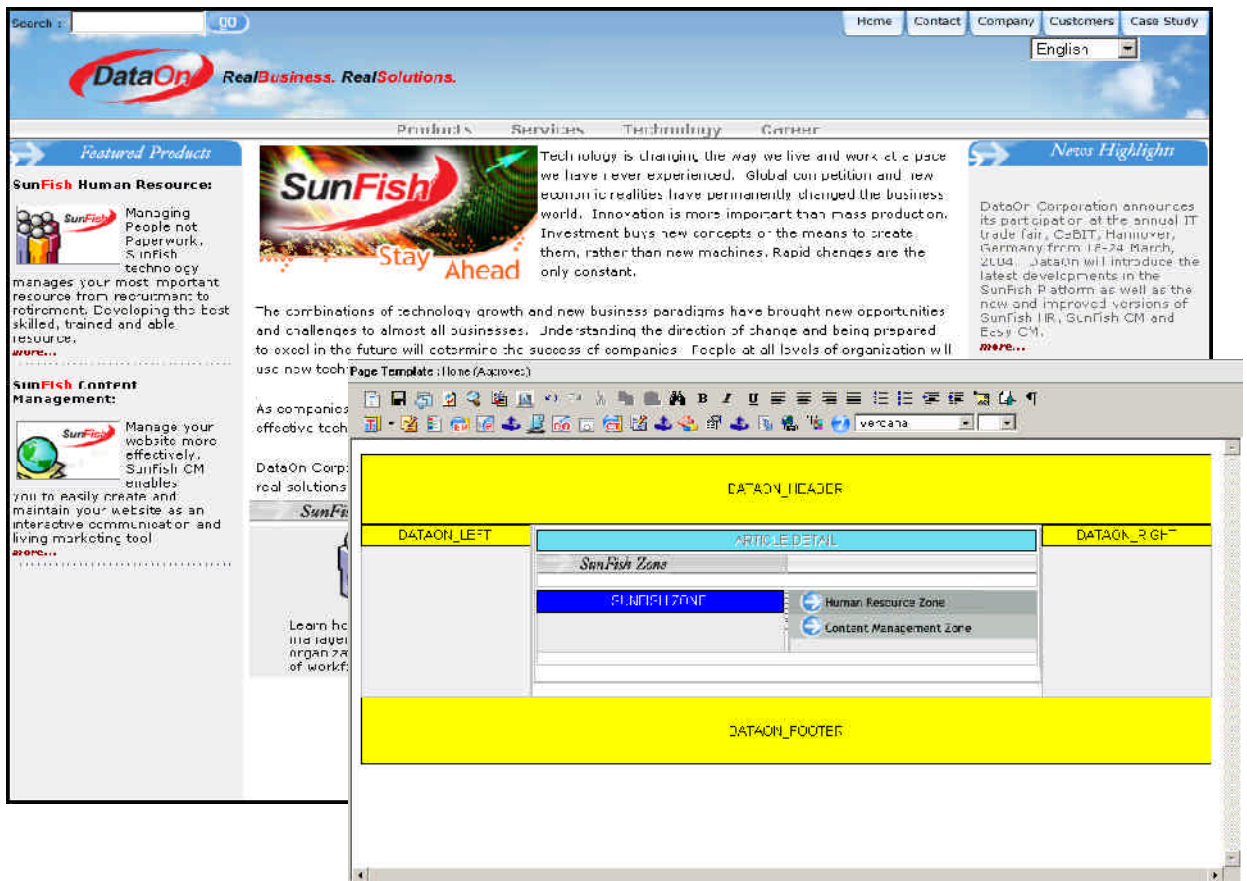




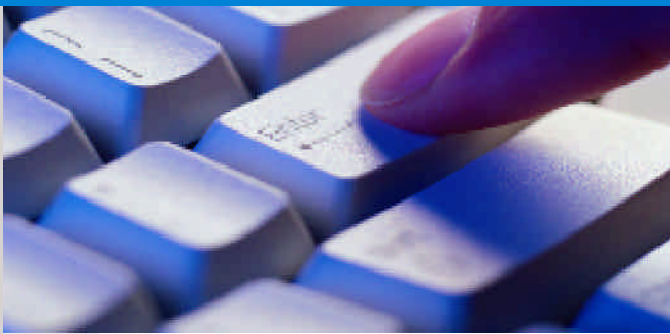
Template Management

Your company invests a lot of work into the website. The layout and visual appeal of the website are designed to promote your corporate brand, giving customers what can often be the first impression of your business. Templates allow the overall look of the website to be separated from the content so that the flow and appearance can be developed and changed separately from large amount of content that a quality website can contain.



Templates work as building blocks of the website. Each template block can be composed from its subordinate template blocks. Eventually, this structure of template blocks will form a web page of the website. Website administrators can work with individual template blocks independently, thus making the work easier to distribute.

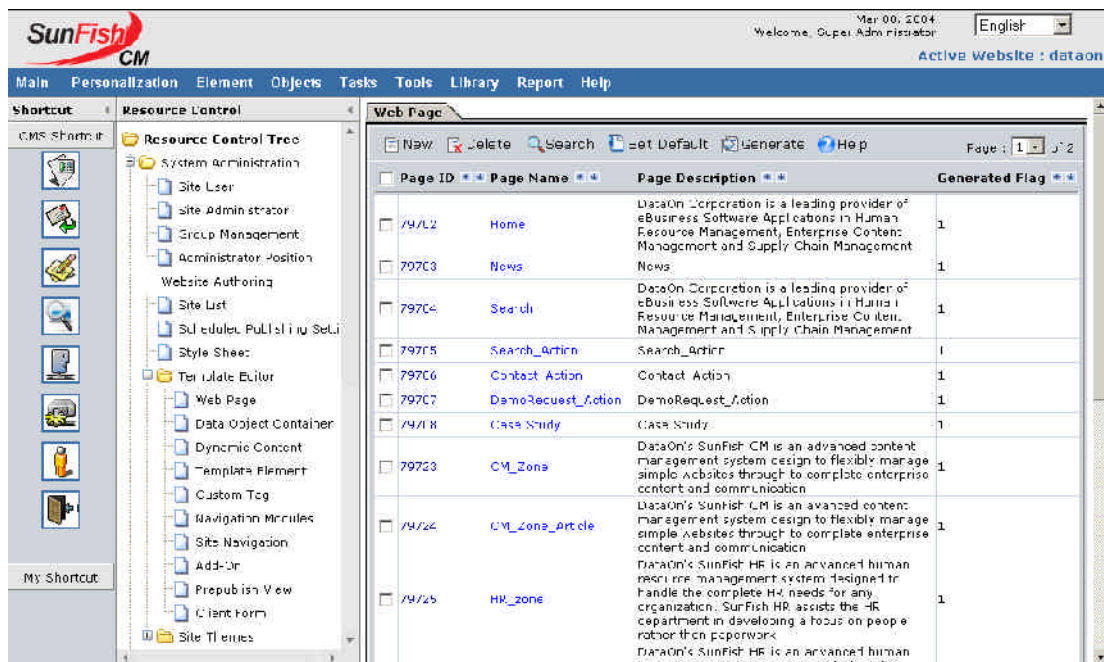
One web page can be made up of many templates, and throughout your website different templates can be used to achieve the appropriate image and layout for different types of content or even different target users.



Template Management

Templates can contain designs, images, multimedia features, article components, other templates and dynamic features. Each piece of content is treated as individual component within the template being constructed. Users can then decide how are they going to manage the layout of the article component for each single template.

Template driven design in CMS allows the site designer to easily create and establish templates to give the site a uniform look. These templates may also be modified when desired to radically alter the appearance of an entire site or specific areas. This also includes visual harmony in layouts content developed after the template is created through cascading style sheets (CSS).



The CMS allows a web designer/developer to design and set up a custom web site template, based on CMS Folder/Page structure, then insert simple tags that transform HTML pages into the templates that present dynamic content in a custom interface. Following deployment, permissions to use the full CMS application can be delegated to non-technical staff who will be responsible for the actual editing the content.

Once the site is set up, the users can view the content through the custom graphical Web interface, while users with editing permissions may log into the CMS Application interface to review, add or modify the content using only a browser connected to the corporate network or Internet. By separating the content (edited in the application interface) from the site's graphic design (controlled by editing HTML template files), users may freely modify the content of the site, without accidentally destroying the work of the designer that created the "public" site's visual structure.