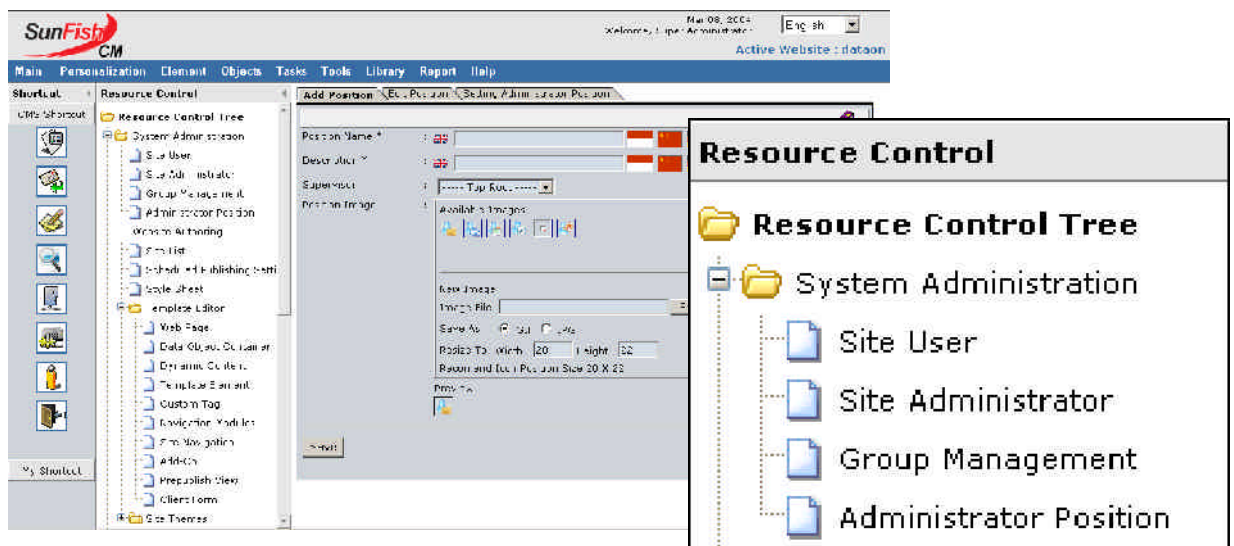


Workflow Management

In order to manage large amounts of content in real-time, website editing often requires that content creation, editing and translating works are distributed to a large number of users. Although this decentralizing of content work will increase speed, it may limit the control that you have over the quality, accuracy, or message contained in the content. In SunFish CM, Workflow Management ensures that you will always maintain the control needed to project the best image with your website.



SunFish CM allows the definition of various workflow steps, as well as different workflow processes for different types of content. For example, a technical article may require editing from the engineering department and final approval from the marketing department.

The Workflow Management enables users to define multi-step processes involving varied content types, cross-departmental staffs, and required actions, such as submit, review or approve.

The SunFish CM application is able to view all content queued for approval and it has workflow ranging from one change to many changes. The flow is maintained independently for every version or edition. Users can see the content report that is queued for approval as well as content that is queued for further processing under the workflow process.

The system can be configured to allow certain functions to certain user groups, and content can be scheduled so that it is published and removed automatically from the website at predetermined times.